

Pneumatic 2 - Way Valves

Flow-rate control

How to Order

A□ - □ **TF** - □□ - **1**

Actuation Mode

2 ... Normally closed
9 ... Normally open

Valve Size

008 ... 1/4"
010 ... 3/8"
015 ... 1/2"
020 ... 3/4"
025 ... 1"

End Connection

F ... Flowell 20series
R ... Flowell 60series
P ... Pillar Super fittings
S ... Pillar Super 300
K ... Kurabo Finallock
T ... Tube type

Tube Standard

A ... metric
B ... inch

特注品も製作いたします。特別仕様の場合はお問い合わせ下さい。
Special orders are acceptable. Consult us about specific applications.

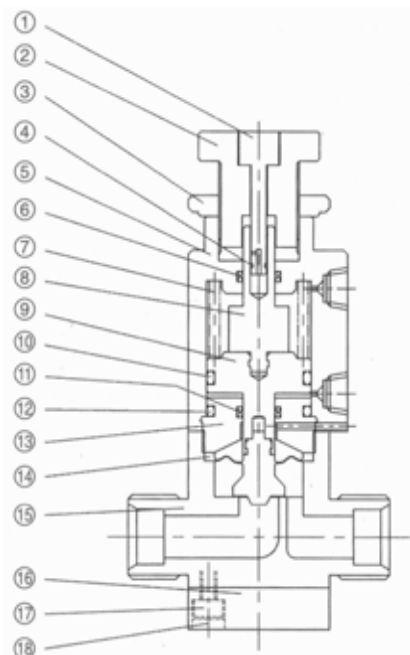
Specifications

Fluid	Chemicals and DI Water
Fluid temperature range	10~100
Fluid pressure range	Inlet Outlet : 0~0.3Mpa
	Back pressure : 0~0.1MPa
Operating system	Spring return actuation and Double action type
Pneumatic supply pressure	0.3~0.6MPa
Atmospheric temperature	0~40
Materials of wetted parts	Diaphragm : PTFE
	Body : PTFE
Additional function	Flow adjustment

全ての仕様は参考値です。

All specifications are for reference only.

Structural drawing

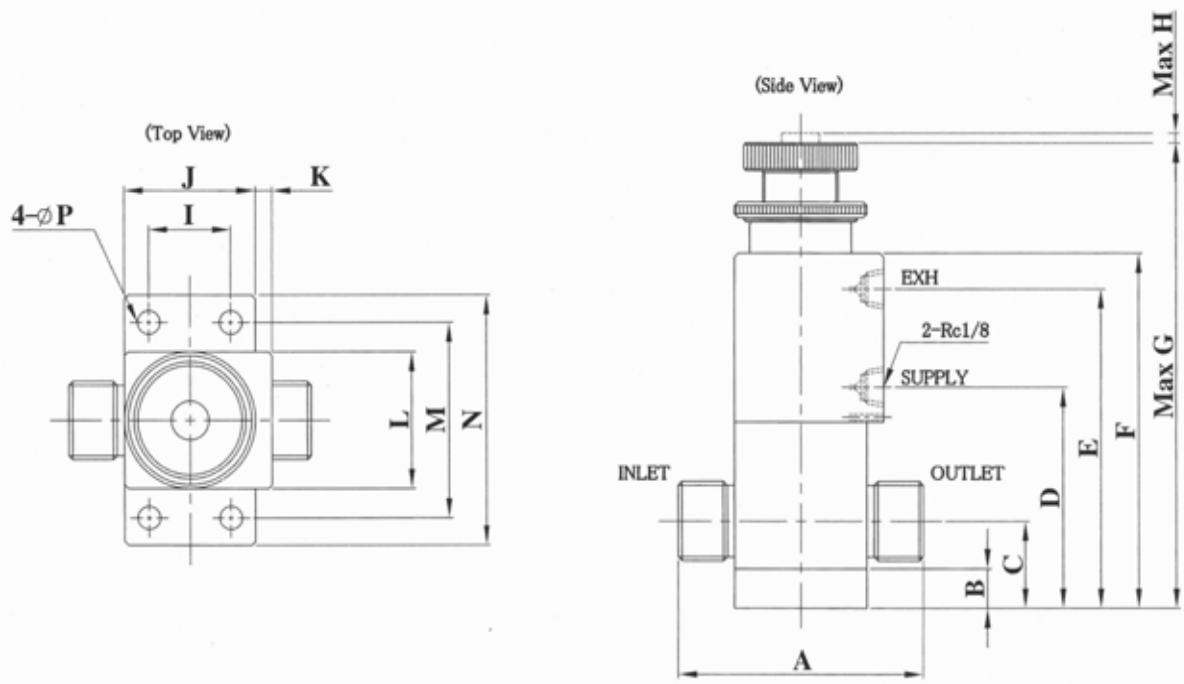


Materials of Construction

No.	Parts	Materials	Notes
	Indicator	PTFE	
	Handle	PP	
	Lock nut	PP	
	O-ring	FKM	
	Case	PP	
	MY packing	FKM	
	Spring	304SS	Fluoropolymer coated
	Indicator shaft	PVDF	
	Piston	PP	
	O-ring	FKM	
	MY packing	FKM	
	O-ring	FKM	
	Stuffing	PP	
	Diaphragm	PTFE	
	Body	PTFE	
⑯	Base	PP	
⑰	Bolt	304SS	
⑱	Cap	PTFE	

304SS=SUS304

Pneumatic 2 - Way Valves Flow-rate control



Dimensions [Units : mm]

Size	Fittings	Orifice	A	B	C	D	E	F	G	H	I	J	K	L	M	N
1/4"	Flowell 20series	5	55	10	16	39	64	73	1.3	22	35	4.5	35	50	64	6
	Flowell 60series	5	84	10	16	39	64	73	1.3	22	35	4.5	35	50	64	6
	Pillar Super fittings	5	59	10	18	41	66	75	1.3	22	35	4.5	35	50	64	6
	Pillar Super 300	5	57	10	18	41	66	75	1.3	22	35	4.5	35	50	64	6
	Kurabo Finallock	5	63	10	18	41	66	75	1.3	22	35	4.5	35	50	64	6
	Tubu type	5	69	10	16	39	64	73	1.3	22	35	4.5	35	50	64	6
3/8"	Flowell 20series	10	59	10	20	54	79	88	2.5	22	35	4.5	35	50	64	6
	Flowell 60series	10	94	10	20	54	79	88	2.5	22	35	4.5	35	50	64	6
	Pillar Super fittings	10	69	10	20	54	79	88	2.5	22	35	4.5	35	50	64	6
	Pillar Super 300	10	65	10	20	54	79	88	2.5	22	35	4.5	35	50	64	6
	Kurabo Finallock	10	75	10	22	56	81	90	2.5	22	35	4.5	35	50	64	6
	Tubu type	10	77	10	20	54	79	88	2.5	22	35	4.5	35	50	64	6
1/2"	Flowell 20series	10	65	10	20	54	79	88	2.5	22	35	4.5	35	50	64	6
	Flowell 60series	10	94	10	20	54	79	88	2.5	22	35	4.5	35	50	64	6
	Pillar Super fittings	10	75	10	22	56	81	90	2.5	22	35	4.5	35	50	64	6
	Pillar Super 300	10	70	10	22	56	81	90	2.5	22	35	4.5	35	50	64	6
	Kurabo Finallock	10	75	10	22	56	81	90	2.5	22	35	4.5	35	50	64	6
	Tubu type	10	81	10	20	54	79	88	2.5	22	35	4.5	35	50	64	6
3/4"	Flowell 20series	16	83	12	28	73	103	120	4	30	45	5	45	60	74	6
	Flowell 60series	16	111	12	28	73	103	120	4	30	45	5	45	60	74	6
	Pillar Super fittings	16	97	12	28	73	103	120	4	30	45	5	45	60	74	6
	Pillar Super 300	16	89	12	28	73	103	120	4	30	45	5	45	60	74	6
	Kurabo Finallock	16	93	12	28	73	103	120	4	30	45	5	45	60	74	6
	Tubu type	16	105	12	28	73	103	120	4	30	45	5	45	60	74	6
1"	Flowell 20series	22	104	15	39	97	130	151	5.5	45	60	4	60	80	96	7
	Flowell 60series	22	138	15	39	97	130	151	5.5	45	60	4	60	80	96	7
	Pillar Super fittings	22	120	15	39	97	130	151	5.5	45	60	4	60	80	96	7
	Pillar Super 300	22	114	15	39	97	130	151	5.5	45	60	4	60	80	96	7
	Kurabo Finallock	22	120	15	39	97	130	151	5.5	45	60	4	60	80	96	7
	Tubu type	22	140	15	34	92	125	146	5.5	45	60	4	60	80	96	7

全ての寸法は参考値です。

. All dimensions are for reference only.