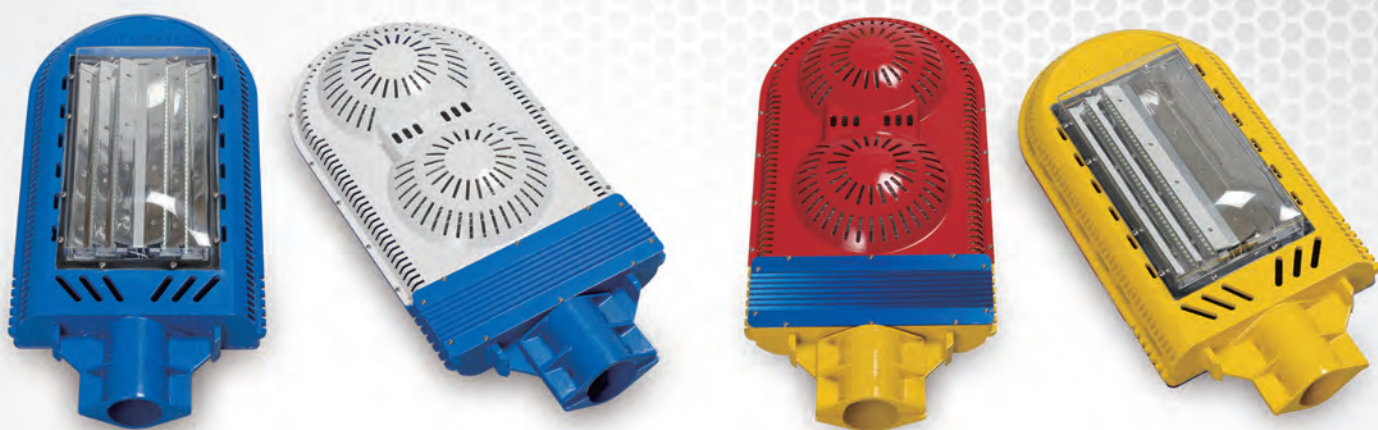


LED Street Lighting

A Worldwide Leading Technology Company
Provides the High Customer Value

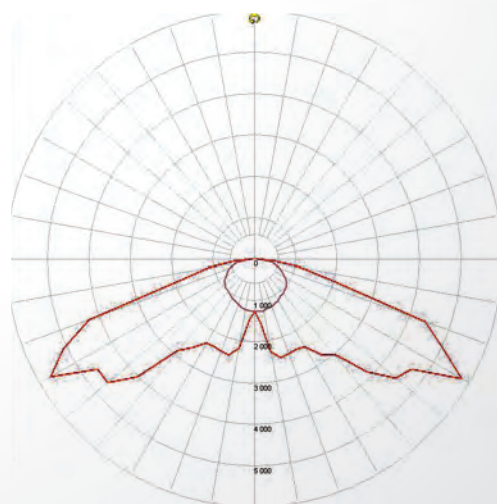
150W, 120W

 PATENT
  PERFORMANCE CERTIFICATION
  EXCELLENCE GOVERNMENT SUPPLY
  KOREAN STANDARD
  HIGH EFFICIENCY DEVICE



Specifications

Model	Specification		
Body Material	Aluminum Alloy		
Dimension	647 x 310 x 175mm		
IP Grade	IP65		
Input Voltage	AC100~220V, 50/60Hz		
Efficiency	Over 90 lm/W		
Model	Model	Color Temperature Level(K)	W
	UNILSTL-15023A	6,500	150
	UNILSTL-15023B	5,700	
	UNILSTL-15023C	5,000	
	UNILSTL-15023D	4,000	
	UNILSTL-12023A	6,500	120
	UNILSTL-12023B	5,700	
	UNILSTL-12023C	5,000	
	UNILSTL-12023D	4,000	
CRI	>75		
Total Flux	120W	Over 10,800 lm	
	150W	Over 13,500 lm	



LED Street Lighting 150W, 120W

Feature

Eliminate the distribution control by Diffusion Lens

Improve the directivity of Luminous Element

Effective Control the diffusion level of Light

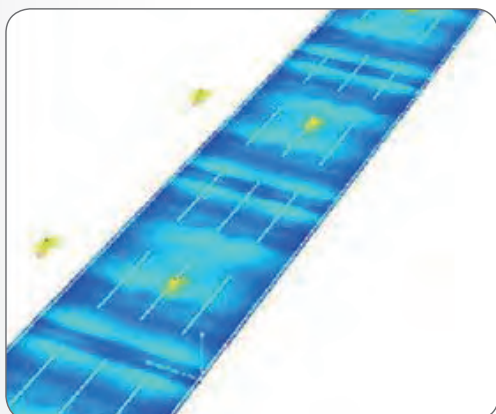
- Outstanding Uniformity.
- High efficiency of over 90lm/W
- Satisfied the Street Light M1 Level.
- Possible the installation interval expansion
- Reduction the Manufacturing cost and Labor time by Lens Free Type
- Domestic/Overseas patent about a way of the distribution control by the Reflector

Outstanding Uniformity

Higher Efficiency

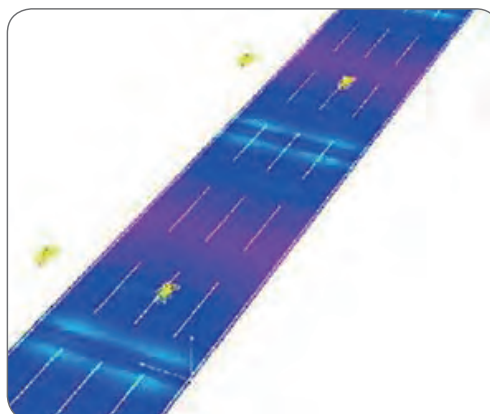
Lower Price

Outstanding Uniformity in case of the Interval Expansion



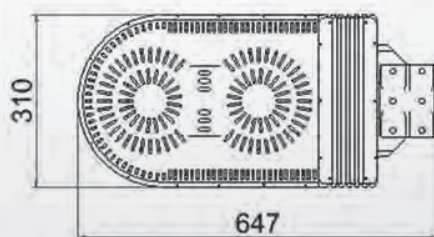
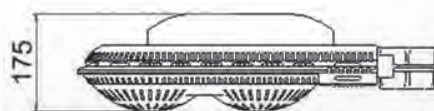
KS Standard Installation

Total Illuminance Uniformity (Eavg/Emax) : 0.8
Lane axis Illuminance Uniformity (Emin/Emax) : 0.8



KS Standard + Max.15m Expansion Installation (30m x 45m)

Total Illuminance Uniformity (Eavg/Emax) : 0.8
Lane axis Illuminance Uniformity (Emin/Emax) : 0.8



Uni Test

#155-1, Hagal-Dong, Giheung-Gu, Yongin-City, Gyeonggi-Do, 446-930
TEL. 82. 31. 205. 6111 FAX. 82.31. 547. 0389
www.solargate.co.kr www.uni-test.com