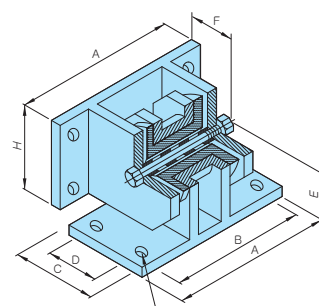


■ 100 - 500 SIZE



■ 2000 - 11000 SIZE

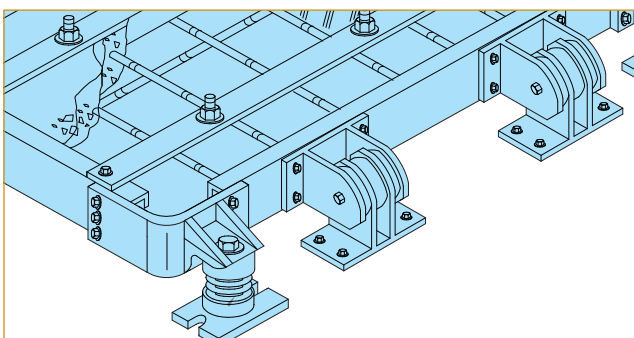
## Product Features

- Prevent translations and overturning moments of equipment when a great outside energy such as seismic force occurs.
- 4~6 units are installed mainly using base.
- Prevents thrust or tilt of HVAC equipment.
- Heavy-duty design withstand more than 1.0G of accelerated force in all direction.

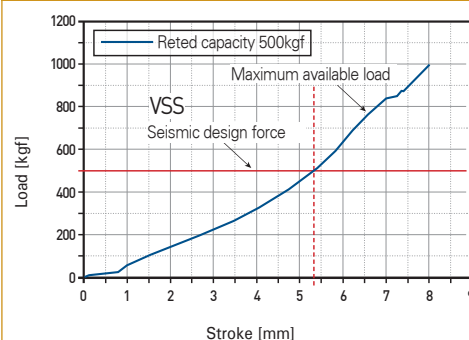
## Product Usage

- AHU equipment, Pump
- Generator, Electric transformer
- Other equipment

## Applications



## Horizontal displacement-load test results



## Product Specification

Model	Dimensions (mm)								Max G-Rating
	A	B	C	D	E	F	H	AH	
VSS-100	130	100	50	-	50	50	75	Φ12	1G All Directional Load Ratings
VSS-500	190	160	75	-	64	64	102	Φ12	
VSS-2000	210	170	150	100	111	111	186	Φ18	
VSS-5000	280	230	180	128	125	125	216	Φ18	
VSS-11000	370	305	200	140	142	142	248	Φ22	

※ Shape and specifications of the products can be changed without prior notice for quality and performance improvement.