

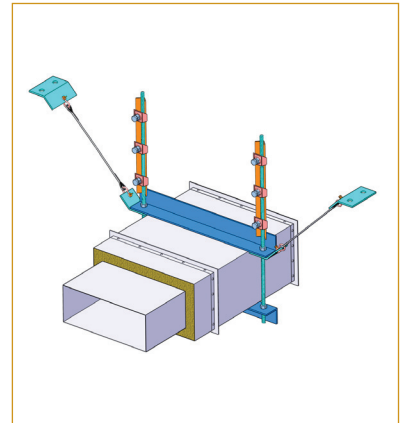
Product Features

- When the earthquake occurs, ceiling mounted systems such as pipe and duct must not break away from the ceiling slab. For this, VSCB is used for structural reinforcement.
- Wire rope is the GAC. (Galvanized aircraft cable)
- Heavy-duty design withstand more than 1.0G of accelerated force in load direction.

Product Usage

- Seismic reinforcement of the duct and the pipe

Applications



Product Specification

Model	Cable Dia. (mm)	Max Load Ratings (kgf) [1g]	Dimensions (mm)			Min. recommended Concrete anchor	Max G-Rating
			L	a	W	AH	
VSCB-A-440	3	440	50	-	35	M12	
VSCB-A-1420	6	1420	100	65	42	M12	1G
VSCB-A-3110	10	3110	130	85	55	M12	

※ VSCB-A-440 : One anchor bolt hole, VSCB-A-1420,3110 : Two anchor bolt holes.

※ Shape and specifications of the products can be changed without prior notice for quality and performance improvement.