

Ordering Code

I H F - R T H L - 1 0 5 - 0 1 - 1 - L

Model Name IHF-RTHL / RENL / REDL / RTHL&RENL / WBAR

Lamp Wattage 105-6.6A 105W (MR-16)

Light Color 01 White/White 02 White/White 03 Green/Red 04 Green 05 Red

No. of Leads 1 or 2

Beam Orientat L:Left C:Center R:Right

Description

Model Name	Item	Specification
IHF-RTHL	Runway Threshold Light	6.6A 105W*2 Green
IHF-RENL	Runway End Light	6.6A 105W*1 Red
IHF-RTHL&RENL	Runway Threshold/End Light	6.6A 105W*3 Green/Red
IHF-REDL	Runway Edge Light	6.6A 105W*2 White/White
IHF-REDL	Runway Edge Light	6.6A 105W*2 White/Yellow
IHF-WBAR	Wingbar Light	6.6A 105W*2 Green

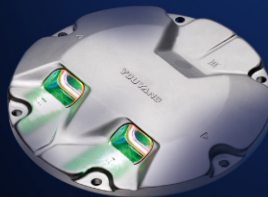
Spare Parts

Description	Specification	Ordering code
Upper cover	Runway Threshold Light	131-518G
	Runway End Light	131-518F
	Runway Threshold/End Light	131-518D
	Runway Edge Light - W/W	131-518A
	Runway Edge Light - W/Y	131-518B
Lower cover	Wingbar Light	131-518G
	For 1 lead	Z140520
Prism	For 2 Leads	Z140530
	White	141-004A
	Red	141-004B
	Yellow	141-004C
Lamp	Green	141-004D
	6.6A 105W	111-224A

IHF-RTHL: RUNWAY THRESHOLD LIGHT
IHF-RENL: RUNWAY END LIGHT
IHF-REDL: RUNWAY EDGE LIGHT
IHF-WBAR: WING BAR LIGHT
IHF-RTHL/RENL: RUNWAY THRESHOLD & END LIGHT

Compliance with standards
ICAO: Annex 14 Para.5.3.9/10/11
IEC: 61827
FAA: AC 150/5345-46, L-850 C,D,E
KS: KS W 5011 (Korean Standard)

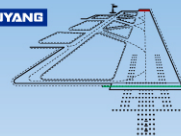
IHF is low protrusion (12mm) inset light and this 12-inch diameter range uses a common casting and light bulbs for applications such as runway threshold, end, wing bar, threshold/end and runway edge lighting.



Features

- Low protrusion (12mm) high intensity inset light
- Body casting made of aluminum alloy for lightness, mechanical strength and durability.
- Easy to replace non-sealed type prism
- Many common components with other YOUYANG 12-inch inset light fixtures
- Smooth sloped upper surface
- 105W lamp type for all applications
- Long lamp life 1000 hours at full brilliancy
- Direct mounting on 12-inch shallow base
- Mounting on standard FAA L-868 12-inch deep base
- Valve for watertightness after maintenance





IHF-RTHL/WBAR



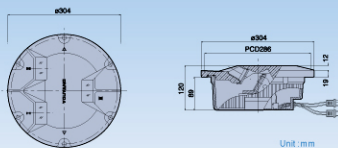
IHF-RENL



IHF-RTHL&RENL

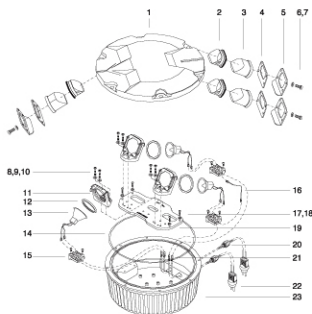


IHF-REDL



Unit: mm

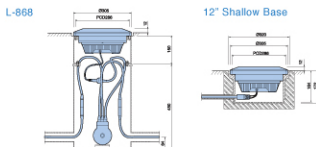
Components



- | | | |
|--------------------|-----------------------------|-------------------|
| 1. Upper body | 9. Spring | 17. Bolt |
| 2. Prism packing | 10. Plate washer | 18. Spring washer |
| 3. Prism | 11. Optical Assembly | 19. Lamp bracket |
| 4. Stopper packing | 12. Lamp fixed ring | 20. Cable gland |
| 5. Prism stopper | 13. Lamp | 21. Terminal |
| 6. Bolt | 14. O ring | 22. 2 pole plug |
| 7. Spring washer | 15. Terminal block Assembly | 23. Lower cover |
| 8. Bolt | 16. Wire | |

Typical Mounting System

Unit: mm

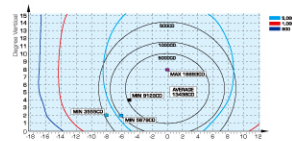


Photometric Performance

▶ Runway Threshold Light

Color	Angle		Lamp	ICAO Intensity	Average Intensity
	V	H			
Green	1-10°	±5.5°	6.6A 105Wx2	10,000cd	13,438cd

● Chromaticity
-Green: X:0.2934, Y:0.4251

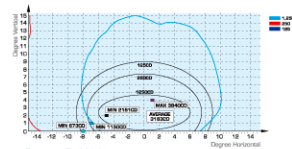


Runway Threshold Light

▶ Runway End Light

Color	Angle		Lamp	ICAO Intensity	Average Intensity
	V	H			
Red	0.25-4.75°	±6°	6.6A 105W	2,500cd	3,163cd

● Chromaticity
-Red: X:0.6679, Y:0.3281

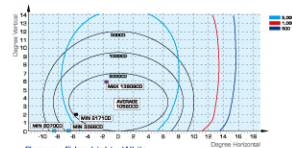


Runway End Light

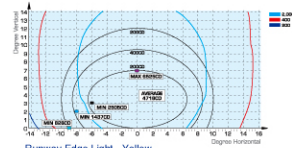
▶ Runway Edge Light - 60meter

Color	Angle		Lamp	ICAO Intensity	Average Intensity
	V	H			
White	0-7°	±6.5°	6.6A	10,000cd	10,580cd
Yellow	0-7°	±6.5°	105Wx2	4,000cd	4,716cd

● Chromaticity
-White: X:0.4152, Y:0.2657
-Yellow: X:0.6070, Y:0.3857



Runway Edge Light - White



Runway Edge Light - Yellow