

ELB LED

ELEVATED OMNIDIRECTIONAL
LOW INTENSITY LIGHT(LED LAMP)



ELB-TEDL : TAXIWAY EDGE LIGHT(LED LAMP)

Compliance with standards

ICAO : Annex14 Para 5.3.16

IEC : 61827

FAA : AC 150/5345-46, L-861T

K S : KS W 5021(Korean Standard)

The ELB consists of a frangible stem in aluminium casting mounted on a 2 inch 11 TPI threaded coupling, an upper body in die casting aluminium housing the LED lamp holder. All the hardware is made of stainless steel. The optical assembly consists of an outer glass dome having an external smooth surface to prevent accumulation of dirt. The light fitting is supplied with a 2-pole plug FAA L-823 with heat resistant wires.

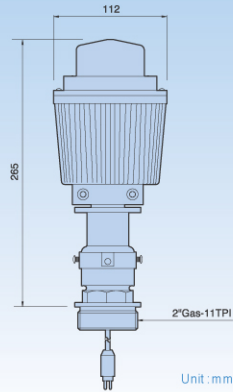
Features

- 3W low rating lamp with 12W power consumption
- Body casting made of aluminium alloy for lightness, mechanical strength and durability
- Environmental friendly materials
- Easy lamp replacement without any tools
- Contained dimensions to withstand jet blast
- Smooth outer dome eliminating the risk of build up of dirt, easy to clean
- Long lamp life 50,000 hours at full brilliancy



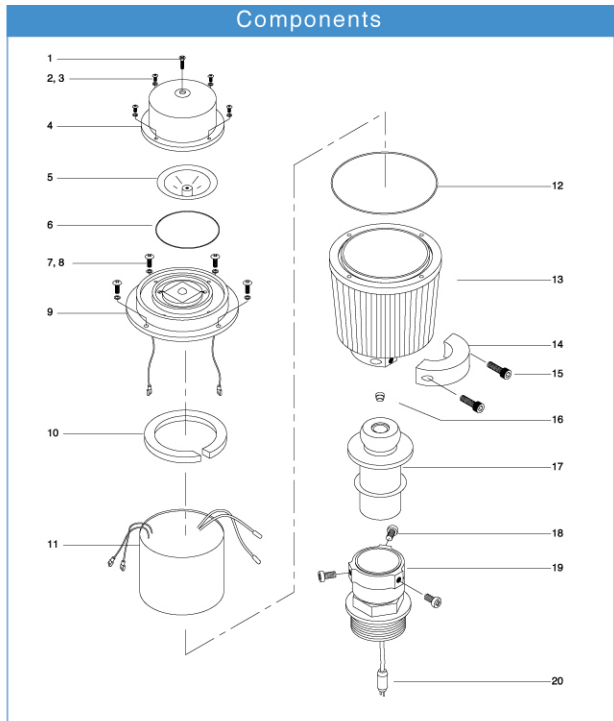
ELB

ELEVATED OMNIDIRECTIONAL LOW INTENSITY LIGHT(LED LAMP)



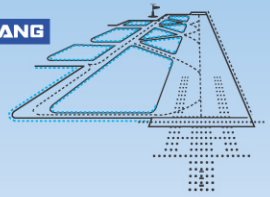
1. Bolt
2. Bolt
3. Plate washer
4. Dome lens
5. Cone mirror
6. O-ring
7. Bolt
8. Plate washer
9. LED lamp Ass'y
10. Packing
11. Power supply Ass'y
12. O-ring
13. Upper body
14. Body clamp
15. Bolt
16. Cord bush
17. Lower body
18. Bolt
19. Breakable coupling(2")
20. 2-pole cable with plug

Components



Electrical Performance

- In put power source: AGL series circuit
- Power consumption: 12W Maximum
- LED lamp
 - Current: 700mA Maximum
 - Power consumption: 3W Maximum

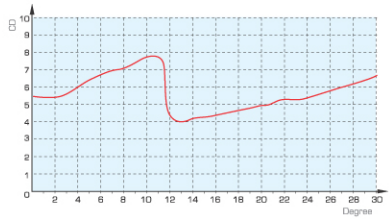


Photometric Performance

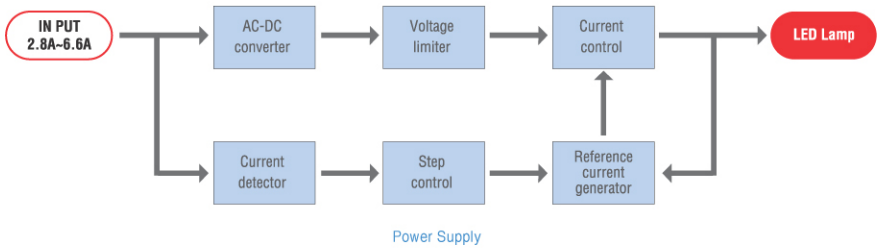
► Taxiway Edge Light(LED)

Color	Main Beam		Lamp	FAA Intensity	Minimum Intensity
	V	H			
Blue	0-6°	360°	3WX1	2cd	3.1cd

● Chromaticity
-Blue X:1.1245, Y:1.0817



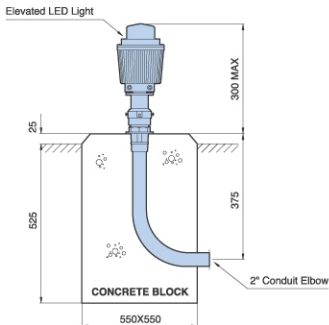
Block Diagram



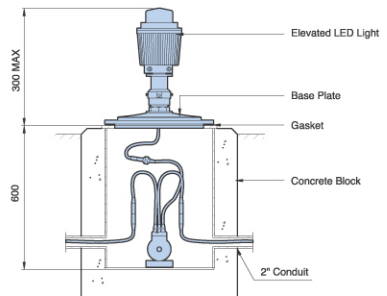
Typical Mounting System

Unit : mm

2" Conduit Elbow



12" Deep Base



Ordering Code

E L B - T E D L - 0 0 3 - 0 1

Model Name ELB-TEDL

Lamp Wattage 003=6.6A 3W(LED)

Light Color 01: Blue 02: Yellow

Description

Model Name	Item	Specification
ELB - TEDL	Taxiway Edge Light	6.6A 3W LED Blue
		6.6A 3W LED Yellow

Spare Parts

Description	Specification	Ordering code
Dome & Lamp Assy	Taxiway Edge Light	411-024, 025A
Power Supply Assy	Taxiway Edge Light	411-026A
Fixture Body Assy	Taxiway Edge Light	411-027, 028A

Head Office

738-2, Kwanyang-Dong, Dongan-Ku,
Anyang City, Kyunggi-Do, Korea

Tel : 82-31-422-0021 Fax : 82-31-424-6044

http://www.youyang.co.kr E-mail: youyang@youyang.co.kr