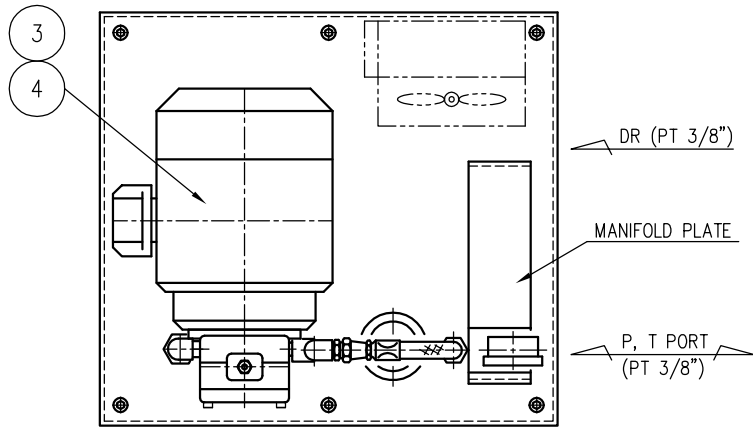


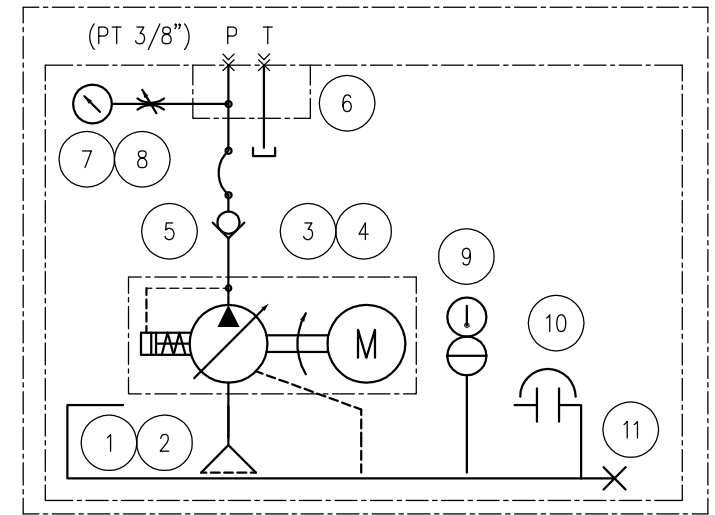
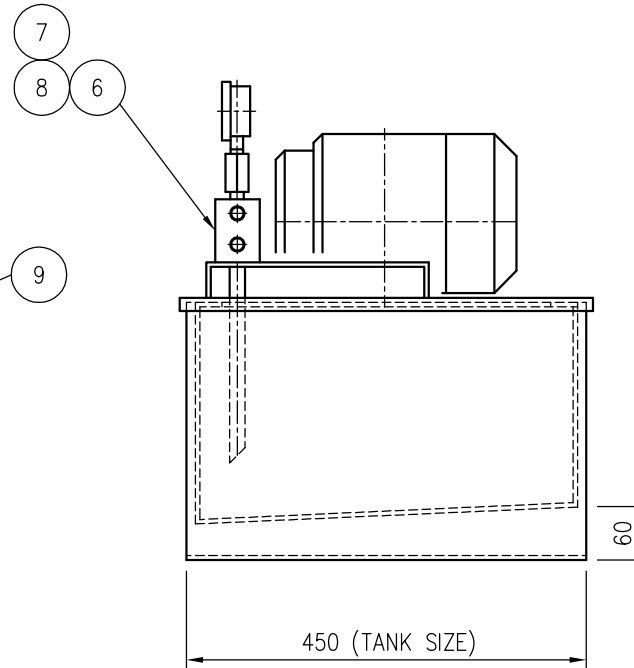
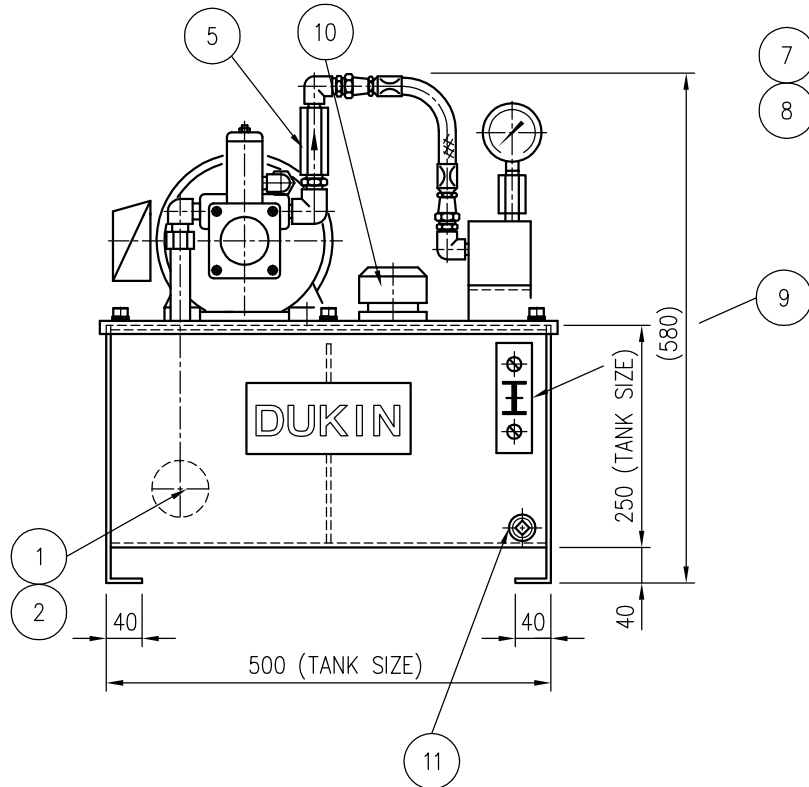
DPU-040-M15-02
M20
M20-03



SPECIFICATION

VP15 (2HP)	PRESSURE	MAX. 60 kgf/cm ²
	DELIVERY	MAX. 15 L/min
VP20 (2HP)	PRESSURE	MAX. 45 kgf/cm ²
	DELIVERY	MAX. 20 L/min
VP20 (3HP)	PRESSURE	MAX. 60 kgf/cm ²
	DELIVERY	MAX. 20 L/min
ELEC' SOURCE	AC220/380V-4P-3φ-60Hz	
HYDRAULIC OIL	MINERAL OIL (ISO VG #46)	
PAINTING COLOR	3.4 PB 3.6/8.2	

ITEM	DESCRIPTION	SIZE	MATERIAL	Q'TY
1	OIL TANK	QT 40LT		1
2	SUCTION FILTER & FLANGE	SFN-04 & SFB-04		1
3	VARIABLE VANE PUMP	VP15 / VP20		1
4	ELEC' MOTOR	2HP (1.5kw) / 3HP (2.2kw)		1
5	IN-LINE CHECK VALVE	HDIN-T03-05		1
6	PORT BLOCK	BT-02-PT		1
7	PRESSURE GAUGE	A φ60 x 100K		1
8	GAUGE DAMPER	DGV-02		1
9	LEVEL GAUGE	C-76		1
10	AIR BREATHER	BAB-1163-40		1
11	DRAIN PLUG	1/2"		1
12				



HYDRAULIC SCHEMATIC DIAGRAM